

# WEBCON BPS

## Upgrading to version 2017.1

### Updating the system to version 2017 from versions 2016 and earlier

The 2017 version of the WEBCON BPS includes two specific changes that directly affect the structure of the database. These two changes were made in order to facilitate the switch to a new method of storing BPS Web Parts, as well as the introduction of many new features.

As a consequence of these changes, the procedure of upgrading to version 2017 differs slightly from previous iterations.

The two changes that require special attention when upgrading to version 2017:

1. The method of storing configuration settings of WEBCON BPS Web Parts has been overhauled. In previous versions, these configuration settings were stored on the MS SharePoint server databases. Starting from WEBCON BPS 2017, the configuration will be migrated over to the native WEBCON BPS database.
2. New methods of logging in to the WEBCON BPS system using external providers have been added in version 2017 (e.g.: Google, LiveID). Due to this, the method of caching user data in WEBCON BPS has been altered. A new cache mechanism was created to store basic user information from both the Active Directory and external providers.

**WARNING!**

**Before starting the update, creating backup copies of WEBCON BPS system databases is highly recommended**

The installer will check for a number of prerequisites that are needed in order to migrate Web Part configurations from SharePoint databases over to WEBCON BPS databases. It will verify whether all SharePoint sites on which the WEBCON BPS Configuration Feature is active are checked-in and published (sites that are checked-out or have unpublished changes cannot be migrated).

**WARNING!**

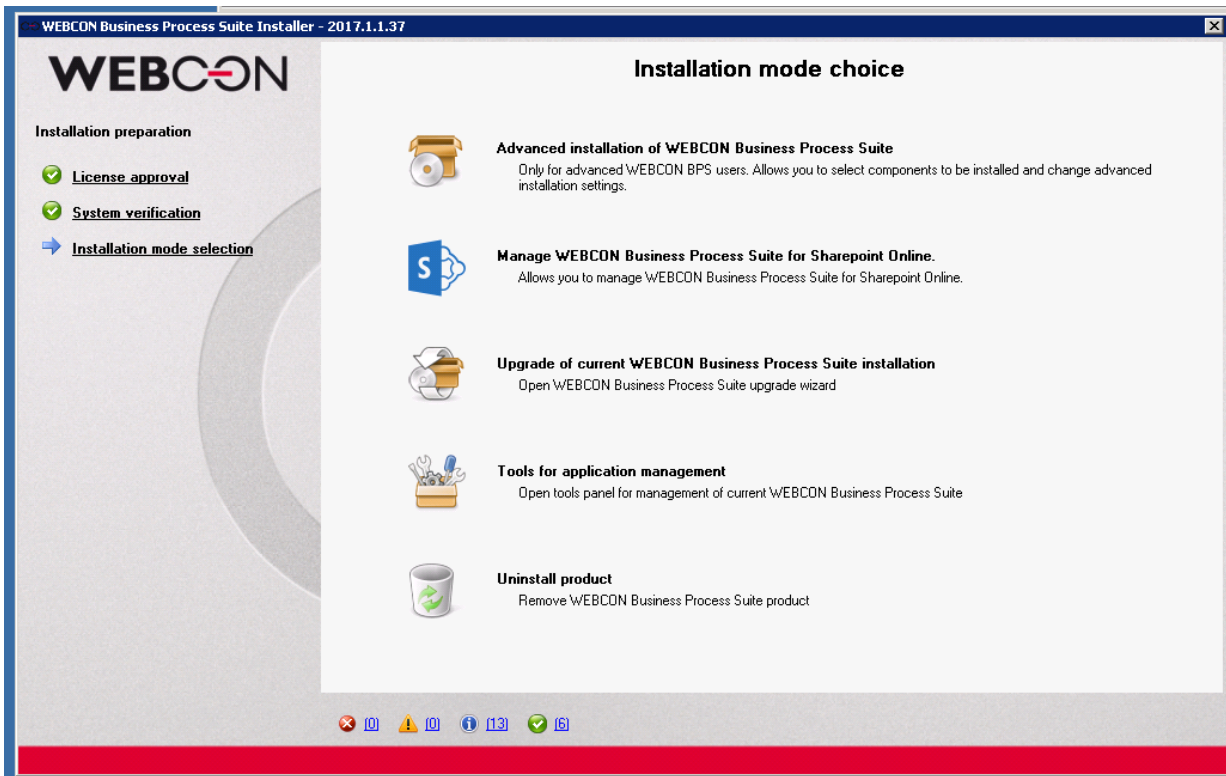
**Depending on the number of SharePoint sites, the process of verifying all of them can take a while.**

In the first step of the verification, the WEBCON BPS Installer will find and make a list of all checked-out SharePoint sites. It will then provide an option to automatically check-in all of the found sites.

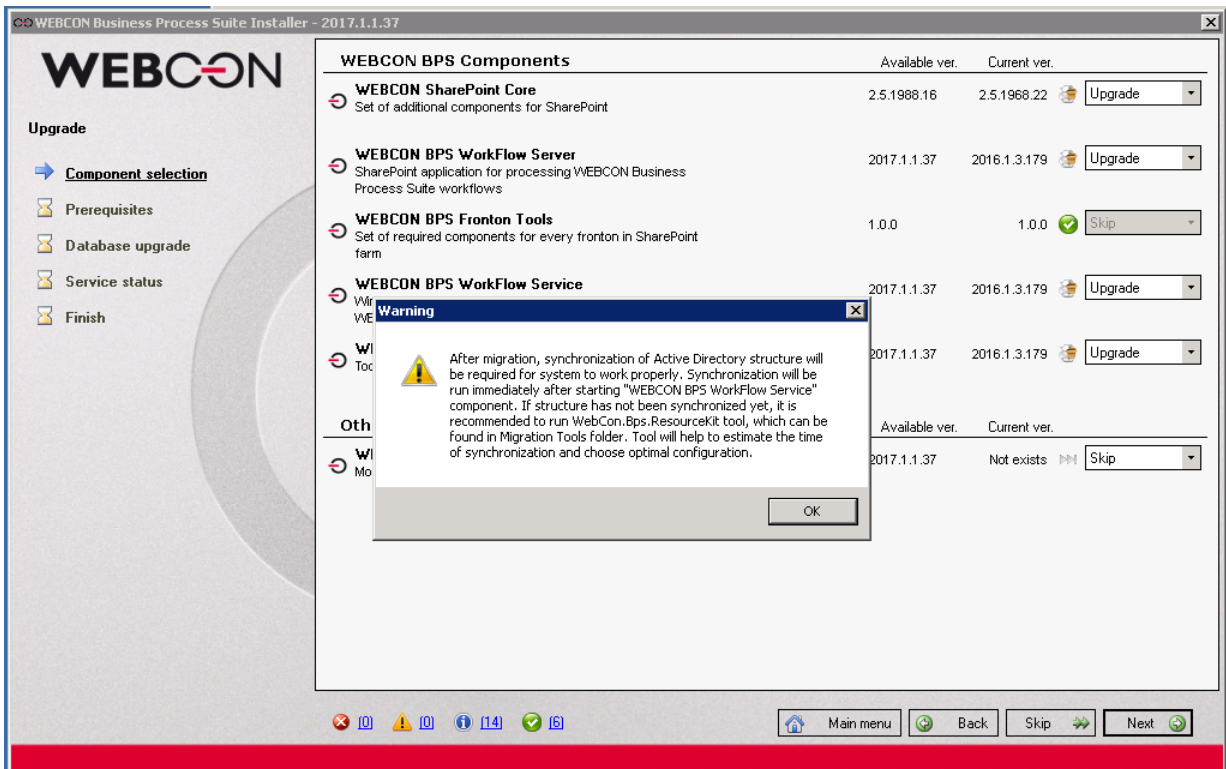
In the second step of the verification, the WEBCON BPS Installer will find and make a list of all unpublished sites (drafts). The user must then decide whether to manually publish some or all of the listed sites. Unpublished sites will be omitted from the Web Part configuration migration procedure.

The individual steps of the upgrade process have been presented below:

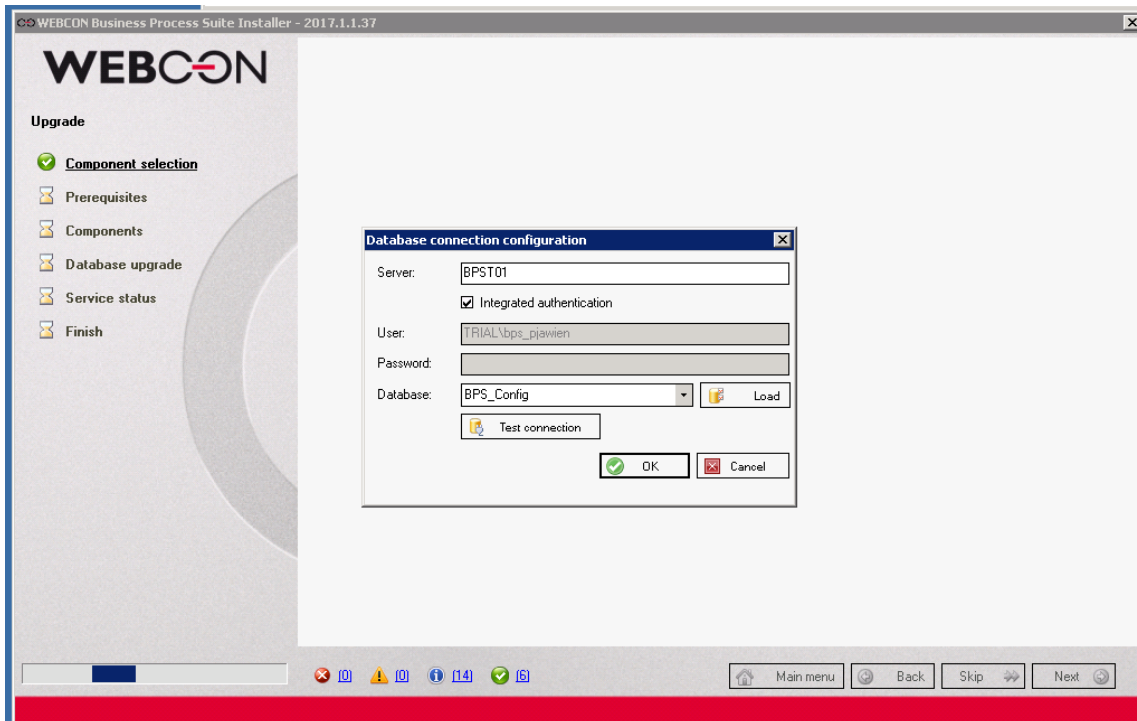
1. Choosing an installation mode.



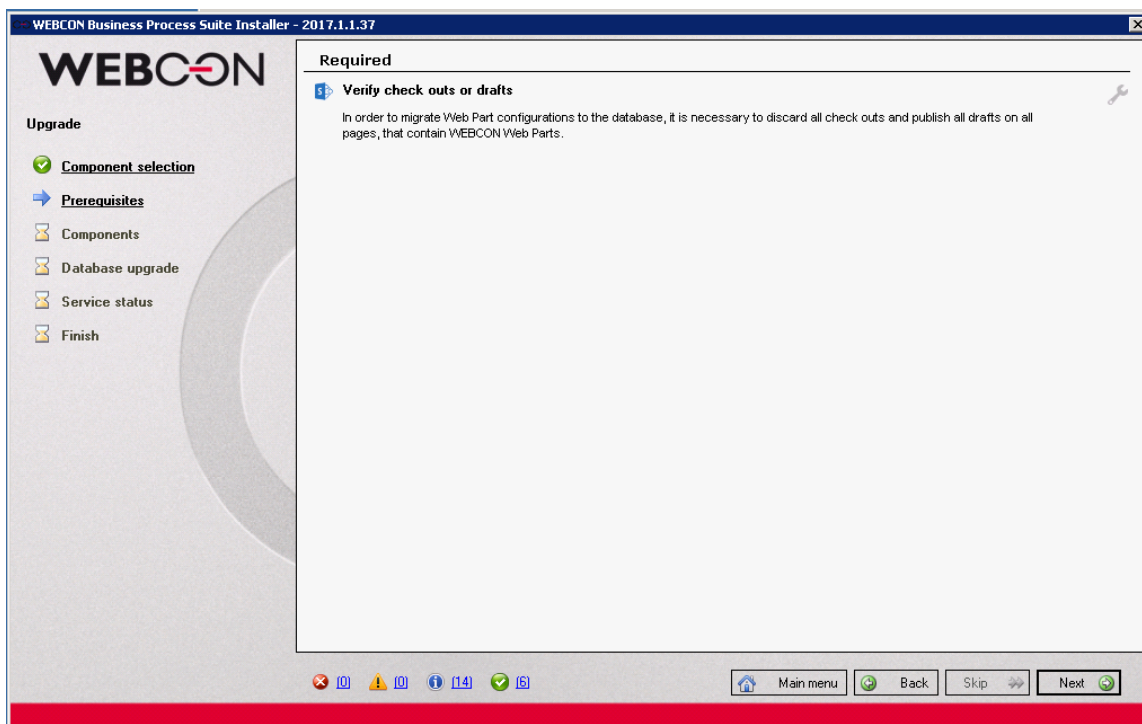
2. After choosing the Upgrade option, a window will appear informing of the need to synchronize the Active Directory once the upgrade is complete (the system will automatically synchronize when first activating the WEBCON BPS service).



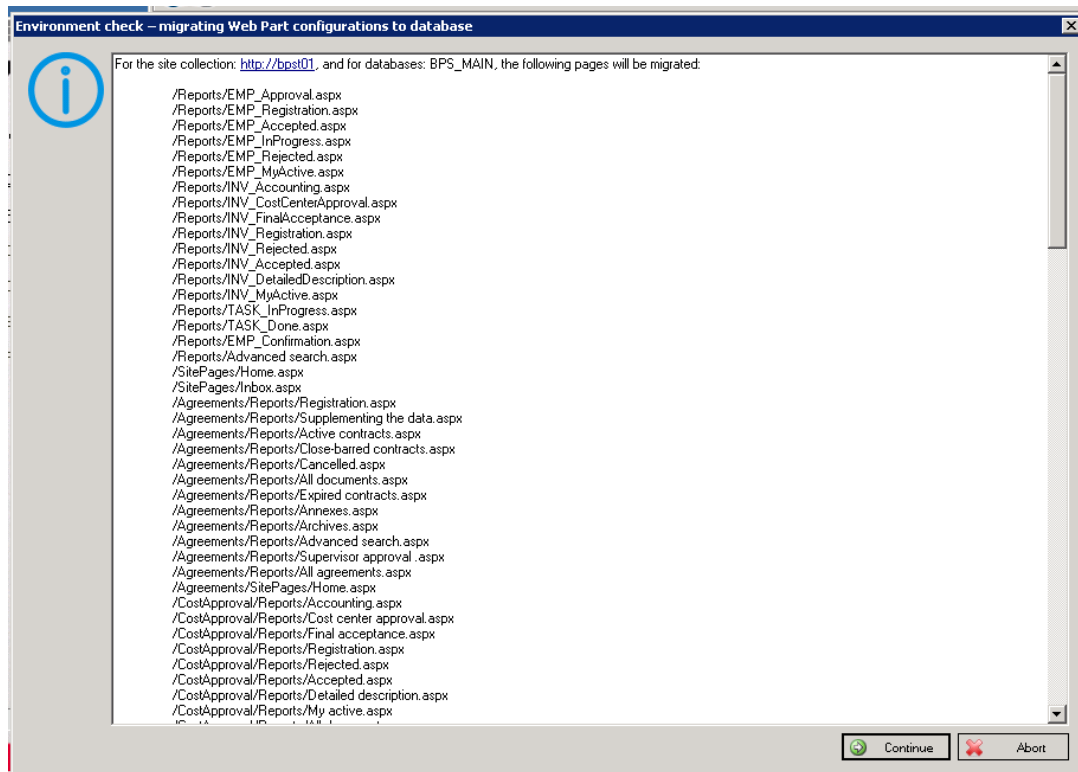
3. Verify the connection to the WEBCON BPS Configuration database (also known as the Process database). Connecting to the configuration database will allow the installer to obtain information about WebApplications and SharePoint sites that have WEBCON BPS installed.



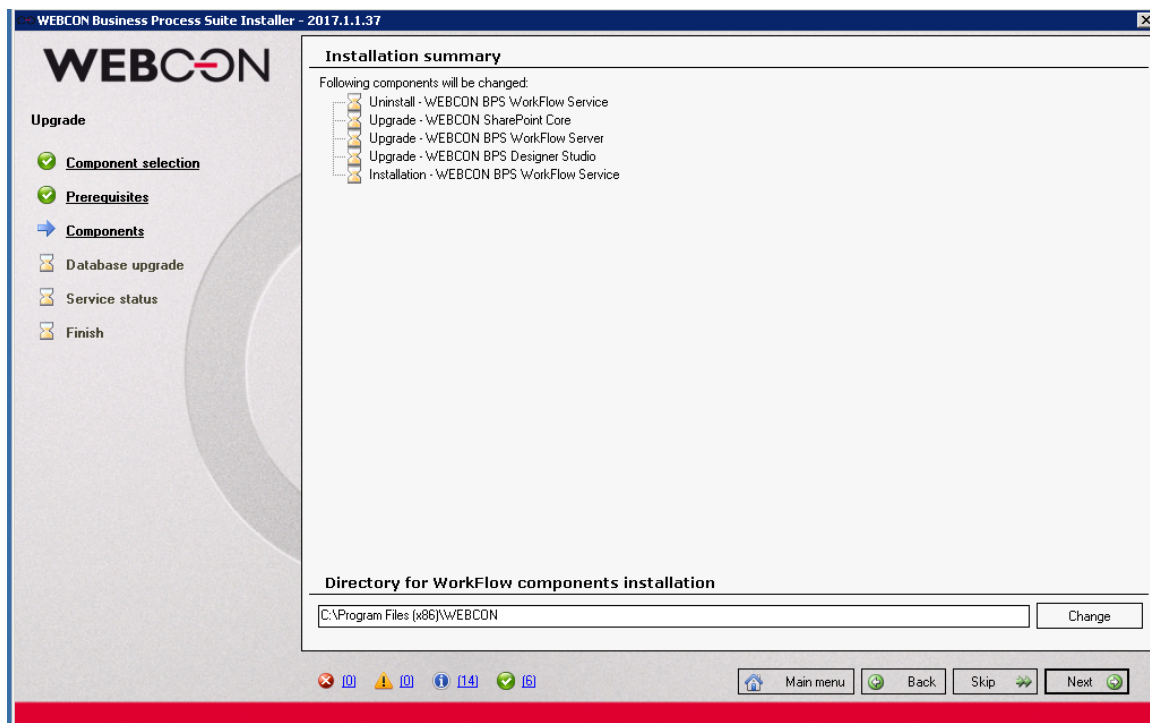
4. The system will now begin verifying SharePoint sites on which WEBCON BPS Configuration Feature is active, in an attempt to find all checked-out sites and unpublished drafts.



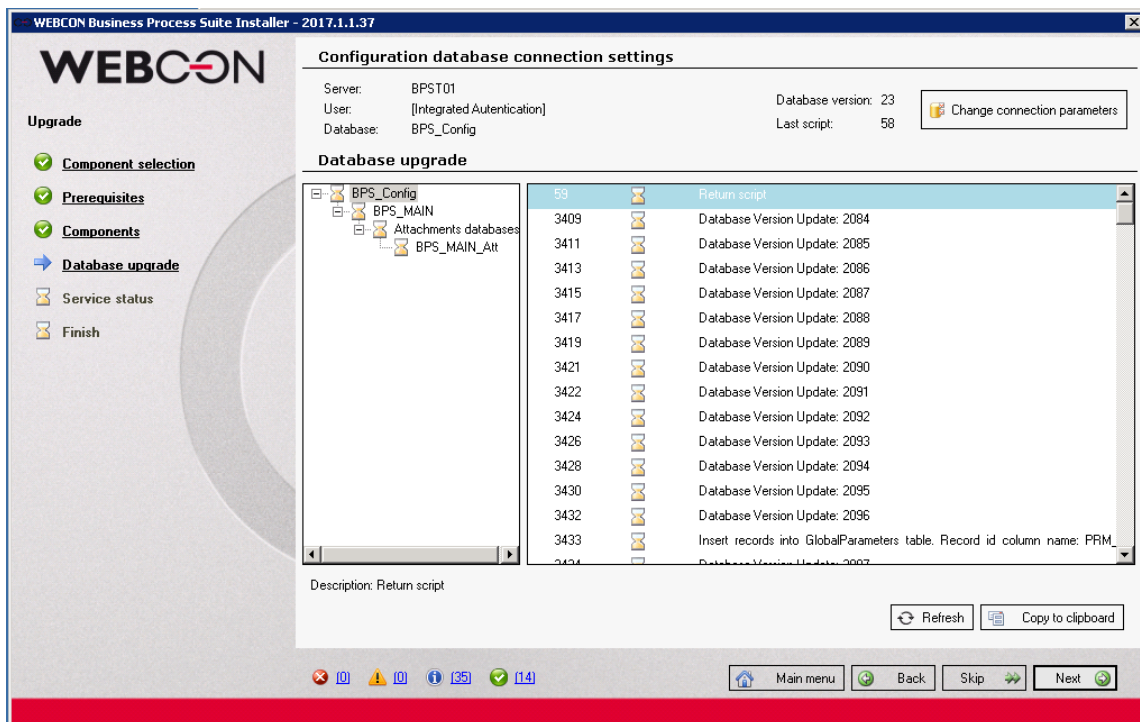
5. Once the verification concludes, a report will list all sites that are ready to be migrated.



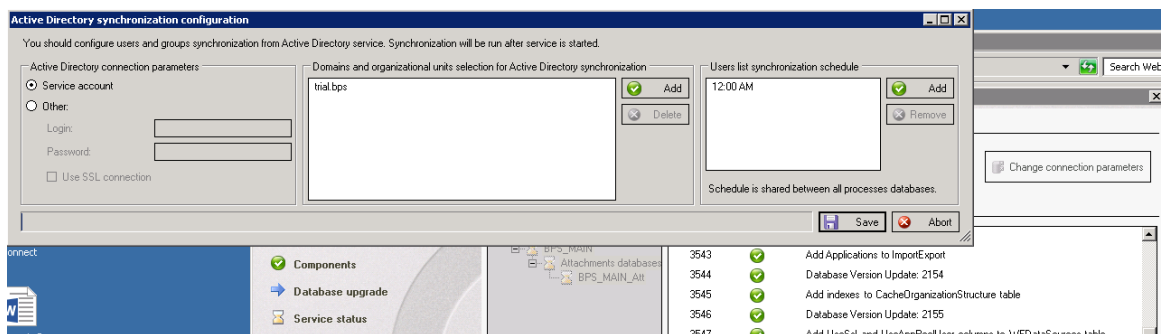
6. The installer will now install new and update existing WEBCON BPS system components.



7. The WEBCON BPS database will also be converted to the newest version.



8. During the database conversion, a pop-up window will appear. This window is used for verifying (and if need be, modifying) the configuration of Active Directory domains, that will be synchronized with the WEBCON BPS system after the upgrade (when the system is launched). This window can also be used to set a synchronization schedule.



9. Remaining installation steps function identically to those found in previous versions.

Once the upgrade concludes, and the system has been successfully updated, launch WEBCON BPS Designer Studio.

Go to **"System settings"** – **"Global parameters"** – **"BPS users list"** and check the synchronization status. A list of users should be visible. If necessary, the synchronization can be launched manually from here.

